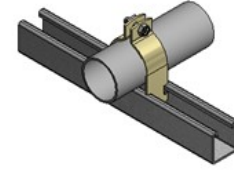


# CUSTOM STRUT & ROLL FORMING

## RIGID Strut Clamps

- Material: Carbon Steel
- Available Finishes:
  - PG: Pre Galvanized
  - YZ: Yellow Zinc Dichromate
  - HDG: Post Fabrication Hot Dip Galvanization
  - PC: Powder Coat
  - SS: Stainless 304 or 316 available upon request



Custom Strut Part #	Description	O.D. Size In.	Parts per Box	Weight per PC. LBS.
RSC050-PG	½" RIGID Strut Clamp	0.840	100	.11
RSC075-PG	¾" RIGID Strut Clamp	1.050	100	.16
RSC100-PG	1" RIGID Strut Clamp	1.315	100	.18
RSC125-PG	1-¼" RIGID Strut Clamp	1.660	100	.2
RSC150-PG	1-½" RIGID Strut Clamp	1.900	100	.28
RSC200-PG	2" RIGID Strut Clamp	2.375	50	.33
RSC250-PG	2-½" RIGID Strut Clamp	2.875	50	.37
RSC300-PG	3" RIGID Strut Clamp	3.500	25	.4
RSC350-PG	3-½" RIGID Strut Clamp	4.000	25	.54
RSC400-PG	4" RIGID Strut Clamp	4.500	25	.61
RSC500-PG	5" RIGID Strut Clamp	5.562	25	.99
RSC600-PG	6" RIGID Strut Clamp	6.625	25	.99
RSC800-PG	8" RIGID Strut Clamp	8.625	10	1.23
RSC1000-PG	10" RIGID Strut Clamp	10.75	10	1.51
RSC1200-PG	12" RIGID Strut Clamp	12.75	10	1.81