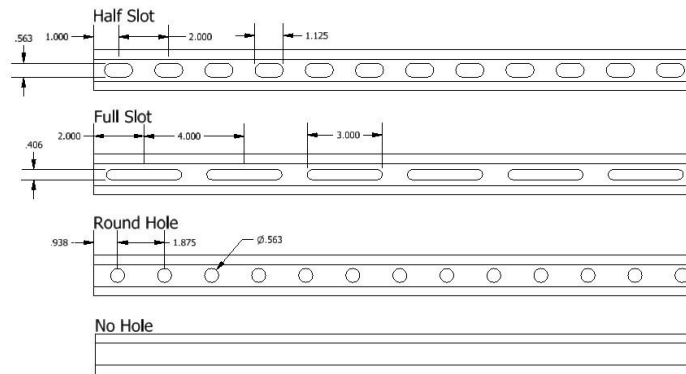
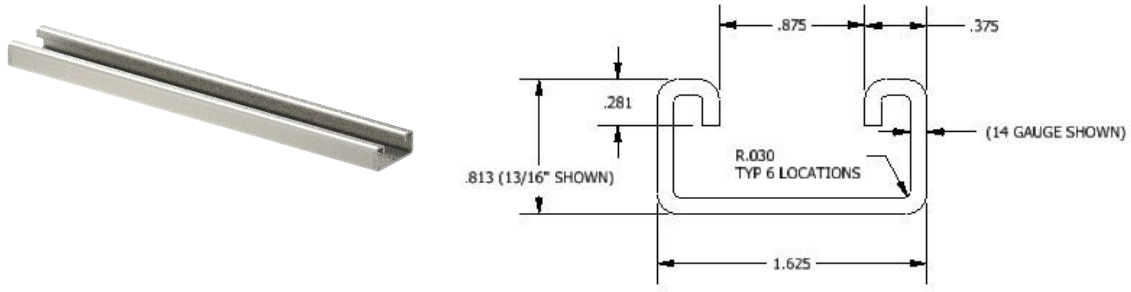


CS1316XX14- 13/16 x 1-5/8" 14 GAUGE CHANNEL STRUT



Item Code	Description	Length (Ft.)	Weight/EA.	Parts Per Pallet	Pallet Weight
CS1316XX14-XX-10	1-5/8 X 1-5/8" 12 GAUGE CHANNEL STRUT 10 FEET	10	10	50	500
CS1316XX14-XX-20	1-5/8 X 1-5/8" 12 GAUGE CHANNEL STRUT 20 FEET	20	20	50	1,000
CS1316XX14-XX-XXIN	1-5/8 X 1-5/8" 12 GAUGE CHANNEL STRUT CUSTOM INCH LENGTH	TBD	TBD	TBD	TBD

Materials, Coatings, and Notes:

- Carbon Steel: ASTM A 1011 SS GR 33
- PG: Pre-Galv: ASTM A653 G60 MIN
- BS: Bare Steel/Plain No coating
- GR: Green powder coat: ASTM B117
- HDG: Hot Dip Galv.: ASTM A123
- YZ: Yellow Zinc plated: ASTM B633

Project:	Date:	Phone/Email:
Submitted By:	Address:	Notes:



CUSTOM STRUT & ROLL FORMING
 800-345-2069 • SPRINGFIELD, OR, USA
 CUSTOMSTRUT.COM

